



Huskie TOOLS



COMPRESSION TOOLS

Huskie Tools Quality Advantage

VERSATILE

Small, portable Huskie Tools hydraulic cutters and compression tools eliminate the cost and labor time required for cartage and set up of cumbersome equipment. Huskie Tools products reduce labor costs because they work faster. You save money on maintenance because our tools last for years with minimal maintenance. You also save the purchase, replacement, and maintenance costs of all the tools just one Huskie Tools product replaces.

CONVENIENT

Self-contained Huskie hydraulic tools are lightweight, portable, and user-friendly. No set up time is required.

SAFE

Hydraulic tools eliminate many risks of injury that are associated with conventional tools. The hydraulic mechanism does the work so there is little risk of continual strain on one muscle or group of muscles that could lead to injuries, lost time from work, or costly medical treatment.

QUALITY

Because of Huskie Tools' superior research and development programs, most of our tools have no competition. Each one is engineered for maximum user efficiency, convenience, and versatility. Our superior technology has led us to a whole new era of cutting and compression tools such as the battery operated REC-6510 and REC-S620 which allow for one man operation. Huskie Tools products are engineered for rugged use and long life. That's why we back them 100% – Huskie's Quality Advantage. Huskie Tools hydraulic tools are manufactured under the strict standards of ISO9001.

WARRANTY POLICY

Huskie Tools products carry a warranty that makes us a leader in the tool industry. No other manufacturer dares to back its tools as we do.

All Huskie REC-SERIES battery operated products carry a 5 year warranty. The ECO-SERIES battery operated products carry a 1 year warranty. The BP-80 & BP-84 batteries carry a 5 year warranty from the date stamped on the battery. The BP-82 battery carries a 1 year warranty.

Huskie Tools reserves the right to determine all warranty claims.

Huskie Tools will not warranty tools containing parts or batteries not originally supplied by Huskie Tools. Failure due to misuse, abuse or repairs attempted by anyone other than Huskie Tools, Inc., or an authorized service center render this warranty null and void.

All factory repaired or reconditioned hydraulic tools carry a one year warranty on parts and labor.

REPAIR & WARRANTY CLAIMS

All claims must be sent to Huskie for inspection and authorization. Before shipping tools to Huskie, a Repair Goods Authorization is required. Secure the authorization online, by telephone or write to Huskie Tools's main office with details of claim. Non-warranty repairs are handled using the same procedure. **Repairs exceeding 50% of the cost of a new tool will be advised before repairs are made.**

For Part Numbers, please visit huskietools.com and click on Huskie Documentation.

PAYMENT TERMS

Upon credit approval Huskie Tools standard payment terms are net-30 days.

FREIGHT

All Huskie Tools products are FOB, Glendale Heights, Illinois. Goods will be shipped pre-paid and added, unless otherwise specified. Freight shipments over \$17,000 are prepaid.

COMPLETE SUPPORT SERVICES

Our customers have direct access to us for training, service, and problem solving. As specialists in tools, we maintain a trained repair staff and a large stock of parts. This contrasts with many tool suppliers who carry tools as a sideline without offering support services.

- * Quick delivery. We maintain inventory at our headquarters.
- * Training and trouble-shooting services.
- * Fast repair service.
- * Design and engineering service for special tool needs.
- * (800) 860-6170 Phone (800) 345-3767 FAX
- * info@huskietools.com
- * Website: www.huskietools.com



Follow Us:



@huskietoolsinc

facebook.com/huskietools



linkedin.com/company/huskie-tools

youtube.com/user/huskietools

Table of Contents

Battery Operated Compression Tools

ECO-EZ	6 Ton Streamline Compression Tool	4
IL-ND	6 Ton Streamline Compression Tool	4
SL-ND	6 Ton Streamline Compression Tool	5
SL-CB	Streamline Cable Bending Tool	6
REC-658U	6 Ton Streamline Compression Tool	6
REC-6NDSL	6 Ton Compression Tool with Changeable Head	7
REC-CN658	6 Ton Compression Tool	8
SL-630	6.2 Ton Streamline Dieless Compression Tool	8
SL-750	6.2 Ton Streamline Dieless Compression Tool	9
REC-6750	6.2 Ton Dieless Compression Tool	9
REC-6630	6.2 Ton Dieless Compression Tool	10
REC-6430	12 Ton Compression Tool	10
REC-6510	12 Ton Compression Tool	11
REC-6510K	12 Ton Compression Tool	11
SL-1000	12 Ton Streamline Dieless Compression Tool	12
SL-510	12 Ton Streamline Compression Tool	12
SL-C510	12 Ton Streamline Compression Tool with C-Head	13
SL-510K	12 Ton Streamline Compression Tool with C-Head	13
SL-610	15 Ton Streamline Compression Tool	14
SL-C610	15 Ton Streamline Compression Tool	14
REC-3410	12 Ton Compression Tool	15
REC-3510	12 Ton Compression Tool	15
REC-3510K	12 Ton Compression Tool	16
REC-3610	15 Ton Compression Tool	16

Hydraulic Compression Tools

CN-258	6 Ton Compression Tool	17
EP-630A	6.2 Ton Dieless Compression Tool	17
EP-750A	6.2 Ton Flip-Top Dieless Compression Tool	17
EP-410	12 Ton Compression Tool	18
EP-430	12 Ton Compression Tool	18
EP-510C	12 Ton Compression Tool	18
EP-510K	12 Ton Compression Tool	19
CN-58H	6 Ton Remote Compression C-Head	19
EP-630HA	6.2 Ton Dieless Remote C-Head	19
EP-750HA	6.2 Ton Flip-Top Dieless Remote C-Head	20
EP-410H	12 Ton Remote Compression C-Head	20
EP-410HT	12 Ton Remote Titanium Compression C-Head	20
EP-430H	12 Ton Remote Compression C-Head	21
EP-510HC	12 Ton Remote Compression C-Head	21
EP-510HK	12 Ton Remote Compression C-Head	21
EP-610H	15 Ton Remote Compression C-Head	22
EP-60WA/WT	60 Ton Single Acting Compression Head	22
EP-60D/DT	60 Ton Double Acting Compression Head	23
EP-100WD	100 Double Acting Compression Head	23

Dies

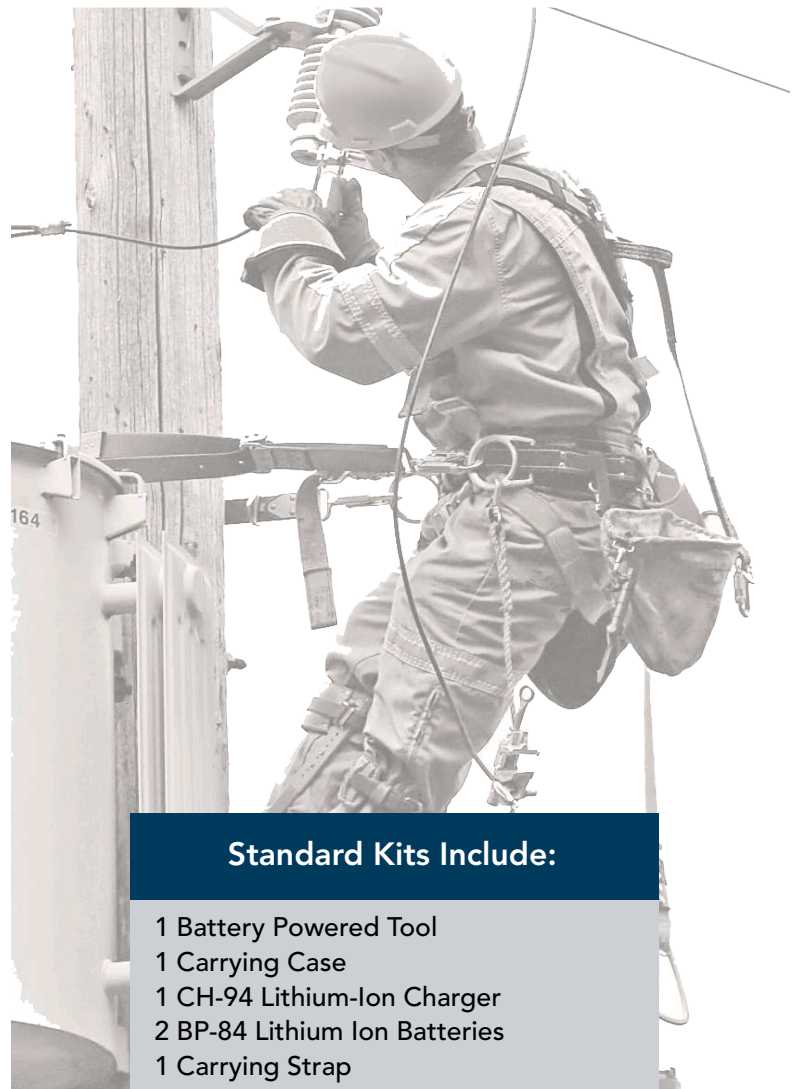
HT58-Series	Equivalent to Burndy "W" Type Dies	26
HT-Series	Equivalent to Kearney "O" Type Dies	26
HT41-Series	Equivalent to Burndy & Kearney "U" Type Dies	27
HTK-Series	Equivalent to Kearney "WH-2" & "WH-3" Type Dies	28
HT61-Series	Equivalent to Burndy "P" Type Dies	28
HA60-Series	Equivalent to Alcoa 60 Ton Dies	29
HA100-Series	Equivalent to Alcoa 100 Ton Dies	29
Wire Rope Die	12 "U" Type Compression Dies	31
Dies Cases	HTK-Case, Die-Case & W-Case	31

Batteries & Charger

BP-82	Lithium-Ion Battery	32
BP-84	Lithium-Ion Battery	32
CH-94	Lithium-Ion Charger	32

Additional Tooling & Accessories

1256-H & 1258-H	Hot Sticks for ECO-EZ Compression Tool	33
REC-SB	Shear Bolt Wrench	33



Standard Kits Include:

- 1 Battery Powered Tool
- 1 Carrying Case
- 1 CH-94 Lithium-Ion Charger
- 2 BP-84 Lithium Ion Batteries
- 1 Carrying Strap



Specifications

Output	6 Ton
Weight	6.5 lbs. with Battery
Size	3.7" L x 20.5" H x 2.8" W

Crimping Estimates

	BP-82
4/0-4/0 H-Tap	100

Connector Range

Lugs and Splices	#8-500 MCM Cu #8-300 MCM Al
H-Taps	Up to 4/0-4/0

Cutting Capacities with RBC-38

ACSR	Up to 4/0
Standard Guy Wire	3/8"
Soft Locks	3/8"
Soft Steel Bolts	3/8"

ECO-EZ 6 Ton Streamline Compression Tool

Features

- 6 Optional Heads to Choose From
- 1 Year Warranty
- Lightweight Ergonomic Design
- Hotstick Tool Available
- Accepts All "W" & "X" Type Dies
- One Hand Operation
- Rotational Head
- Audible Bypass when Predetermined Pressure is Achieved
- Tested Up To 75kV
- Compatible with All Huskie 14.4V Batteries
- Brush Protection Guards



The **ECO-EZ** Streamline compression tool has a powerful 6 ton output. When ordering, choose from any of the six available heads that meet your needs which will be installed at the factory. If multiple jaws are needed they can be replaced fairly simply by removing the snap ring on pin. The swivel head design allows the jaws to rotate to 180° for operator convenience.

No need for another battery system. This tool operates on the same 14.4 volt battery used in all of the Huskie ROBO Tools. Just like the rest of our battery tools, energized lines will not effect the operation or performance of the tool.

IL-ND 6 Ton Streamline Compression Tool

Specifications

Output	6 Ton
Weight	7.3 lbs. with Battery
Size	3.7" L x 21" H x 3.1" W

Crimping Estimates

	BP-84
4/0-4/0 H-Tap	200

Connector Range

Lugs and Splices	#8-500 MCM Cu #8-350 MCM Al
H-Taps	Up to 4/0-4/0

Features

- 3 optional heads to Choose From
- 3 Year Warranty
- Lightweight Ergonomic Design
- Accepts all "W" & "X" Type Dies
- One Hand Operation
- Rotational Head
- Audible Bypass when Predetermined Pressure is Achieved
- Tested up to 75kV
- Compatible with all Huskie 14.4V Batteries
- Brush Protection Guards



The newly developed **IL-ND** streamline tool was designed as an upgrade to the ECO-EZ tool giving the user a more robust product with a true 3 year life cycle. Enhancements to the hydraulic system, a more robust heavy duty motor similar to the "SL" tool as well as a re-designed compression head that utilizes less hydraulic force while delivering a 6 ton output compression force, are just a few of the design implementations used in this new series. We have also added a rubber over-mold to the housing that will allow the operator better tool control with the non-slip grip, as well as an updated aesthetic look, separating it from the competition.

SL-ND

6 Ton Streamline Compression Tool with Changeable Heads



Features

- Forged Jaws for Long Life
- Brush Protection Guards
- New Pull-Pin Design for Quick Jaw Change
- Bright White, LED Lights for Working in Low Light Conditions
- 6 Compression Heads to Choose From
- 3 Cutting Heads to choose from
- One Hand Operation
- Rotational Head
- Audible Bypass when Predetermined Pressure is Achieved
- Tested Up To 75kV
- 5 Year Warranty on Tool, Battery & Charger

Specifications

Output	6 Ton
Weight	8.2 lbs. with Battery
Size	3.7"L x 22"H x 2.8"W

Crimping Estimates

	BP-84
4/0-4/0 H-Tap	200

Connector Range

Lugs and Splices	#8-500 MCM Cu #8-350 MCM Al
H-Taps	Up to 4/0-4/0

Cutting Capacities	SLCUT-JAW	SL-CHACSR	SL-CHCUAL
Copper		350 MCM	500 MCM
Aluminum		350 MCM	1" O.D.
ACSR	Up to 4/0	336 MCM	
Std. Guy Wire	Up to 3/8"		
Soft Locks	Up to 3/8"		
Soft Steel Bolts	Up to 3/8"		

OPTIONAL ACCESSORIES

10 JawTypes to Choose From



SLK-JAW



SLBG-JAW



SL-CHCUAL



SL-CHACSR



SLCUT-JAW



SLO-JAW



SLND3-JAW



SLXPJ-JAW



SLXMJ-JAW



SLCB-JAW

The **SL-ND** was developed after listening to feedback from our customers for a more robust, higher-quality, streamline tool. This new tool platform is the culmination of almost three years of research and development and will stand up to the most demanding tasks that linemen face every day.

The SL-ND has a choice of jaw types, including six compression heads, the SLXPJ-JAW, SLXMJ-JAW, SLK-JAW, SLND3-JAW, SLO-JAW, or SLBG-JAW. For cutting, switch to the SLCUT-JAW, SL-CHCUAL, or SL-CHACSR, and for bending, use the SLCB-JAW. Quickly change between head types with the pull-pin design. No need for another battery system, as this tool operates on the same 14.4 volt battery used in all of the battery operated tools. The SL-ND Streamline tool not only carries a 5 year warranty on the tool but on the battery and charger as well.



SL-CB

Streamline Cable Bending Tool

Specifications

Weight	14.4 lbs. with Battery
Size	7"L x 22"H x 14"W

Bending Uses

Underground Vaults
Meter Bases
Substation

Bending Capacity

Cable	1000 MCM Cu For Larger Cable, Consult Factory
-------	---

Features

- New Pull-Pin Design for Quick Jaw Change
- Bright White, LED Lights for Working in Low Light Conditions
- Audible Bypass when Predetermined Pressure is Achieved
- Tested Up To 75kV
- 5 Year Warranty on Tool, Battery & Charger



The **SL-CB**, the first of its kind in the electrical utility industry, is a battery powered cable bender. The SL-CB utilizes the pull-pin design, allowing technicians to change jaws from compression, to cutting, to cable bending. The SL-CB is just one of the many ergonomic solutions, provided by Huskie Tools, to help reduce strains and sprains associated with the daily tasks of a powerline technician. The SL-CB has several different settings, so the tool can be used on either secondary or primary conductor in a variety of sizes. Featuring a low profile, the SL-CB can be used in a variety of close-quarter environments; such as underground vaults, meter bases and substation applications and wherever cable bending is required.

NOTE: Contact cable manufacturer for specified cable bending radii and cable bending requirements.

REC-658U

6 Ton Compression Tool

Specifications

Output	6 Ton
Weight	8.2 lbs. with Battery
Size	14.3"L x 10"H x 3.1"W
Jaw Opening	1.8"

Crimping Estimates

	BP-84
#6 Cu/Al	250
1/0 Cu/Al	195
4/0 Cu/Al	150

Connector Range

Lugs and Splices	#8-500 MCM Cu #8-300 MCM Al
H-Taps	Up to 4/0-4/0

Optional Accessories

25 CAT	Cutter Head
HT58CUT	Cutter Die

Features

- Interchangeable Cutter Head
- Rapid Advance
- One Hand Operation
- Tested Up to 75kV
- Rotational Head
- Bright White, LED Lights for Working in Low Light Conditions
- Ergonomically Designed for Balance and Grip
- Weather Resistant Housing
- Audible Bypass when Predetermined Pressure is Achieved
- 5 Year Warranty on Tool, Battery & Charger



The **REC-658U** was designed to squeeze commonly used service entrance connectors, including lugs, sleeves, H-Taps and C-Taps. The rapid advance feature allows the operator quicker compression cycles. In addition to the rapid advance feature, it also has incorporated an electronic counter that will allow a service technician to read the number of compression cycles the tool has made. Also, the new tool housing has been reinforced to improve durability during heavy field use.

A factory pre-set bypass cartridge assures a six ton compression every time. The REC-658U accepts either "W" or "O" type dies. The D3 nest die comes standard with the tool. Always consult your connector manufacturer for proper die/connector combinations. The REC-658U will accept the optional 25CAT cutter head attachment. Quick release pins allow the operator to change between compression and cutter head in one minute with no springs or pins to lose.

REC-6NDSL

6 Ton Compression Tool
Changeable Head



Specifications

Output	6.2 Ton
Weight	9.8 lbs. with Battery
Size	14.3"L x 10"H x 3.1"W

Crimping Estimates

	BP-84
#6 Cu/Al	250
1/0 Cu/Al	200
4/0 Cu/Al	150

Connector Range

Lugs and Splices	#8-500 MCM Cu #8-350 MCM Al
H-Taps	Up to 4/0-4/0

Cutting Capacities	SLCUT-JAW	SL-CHACSR	SL-CHCUAL
Copper	Do Not Cut	350 MCM	500 MCM
Aluminum	Do Not Cut	350 MCM	1" O.D.
ACSR	Up to 4/0	336 MCM	Do Not Cut
Std. Guy Wire	Up to 3/8"	Do Not Cut	Do Not Cut
Soft Locks	Up to 3/8"	Do Not Cut	Do Not Cut
Soft Steel Bolts	Up to 3/8"	Do Not Cut	Do Not Cut

OPTIONAL ACCESSORIES

10 JawTypes to Choose From



SLK-JAW



SLBG-JAW



SL-CHCUAL



SL-CHACSR



SLCUT-JAW



SLO-JAW



SLND3-JAW



SLXPJ-JAW



SLXMJ-JAW



SLCB-JAW

Features

- Rapid Advance
- 6 Compression Heads to Choose From
- 3 Cutting Heads to Choose From
- Brush Protection Guards
- New Pull-Pin Design for Quick Jaw Change
- One Hand Operation
- Tested Up to 75kV
- Rotational Head
- Forged Jaws for Long Life
- Ergonomically designed for Balance and Grip
- Weather Resistant Housing
- Audible Bypass when Predetermined Pressure is Achieved
- 5 Year Warranty on Tool, Battery & Charger

The **REC-6NDSL** has a choice of jaw types, including six compression heads, the SLXPJ-JAW, SLXMJ-JAW, SLK-JAW, SLND3-JAW, SLO-JAW, or SLBG-JAW. For cutting, switch to the SLCUT-JAW, SL-CHCUAL, or SL-CHACSR, and for bending, use the SLCB-JAW. Quickly change between head types with the pull-pin design. No need for another battery system, as this tool operates on the same 14.4 volt battery used in all of the battery operated tools. The SL-ND Streamline tool not only carries a 5 year warranty on the tool but on the battery and charger as well.

In addition to the rapid advance feature incorporated into the new REC-6NDSL, it also has an electronic counter that allows a service technician to read the number of compression cycles. Also, the tool housing has been reinforced to improve durability during heavy field use.



REC-CN658

6 Ton Compression Tool

Specifications

Output	6 Ton
Weight	10.7 lbs. with Battery
Size	16"L x 10"H x 3.1"W
Jaw Opening	.95"

Crimping Estimates

	BP-84
#6 Cu/Al	250
1/0 Cu/Al	190
4/0 Cu/Al	150

Connector Range

Lugs and Splices	#8-500 MCM Cu #8-300 MCM Al
H-Taps	Up to 4/0-4/0

Features

- Open C-Head Design
- Rapid Advance
- One Hand Operation
- Tested Up to 75kV
- Rotational Head
- Bright White, LED Lights for Working in Low Light Conditions
- Ergonomically Designed for Balance and Grip
- Weather Resistant Housing
- Audible Bypass when Predetermined Pressure is Achieved
- 5 Year Warranty on Tool, Battery & Charger



The **REC-CN658** is an open jaw version of the REC-658U latched type tool. The open jaw can easily fit into tight situations where the closing of a jaw latch would be a problem. The jaw is covered with a rubber boot designed to provide some insulated protection against "brush" contact with energized cables. The tool should not be used as an insulated tool since the dies and die holding pins are always exposed.

SL-630

6.2 Ton Streamline Dieless Compression Tool

Specifications

Output	6.2 Ton
Weight	10.5 lbs. with Battery
Size	5"L x 21.5"H x 2.7"W
Jaw Opening	.9"

Crimping Estimates

	BP-84
4/0 Cu	90
500 MCM Cu	110

Connector Range

*Lugs and Splices	#6 AWG - 500 MCM Cu/Al
-------------------	------------------------

Features

- Four-Sided Dieless Crimp System
- *Designed to crimp Anderson Connectors & Other Brand Connectors Manufactured to ANSI C119.4
- Eliminates the Need for Dies
- Tested Up to 75kV
- Rotational Head
- Bright White, LED Lights for Working in Low Light Conditions
- Audible Bypass when Predetermined Pressure is Achieved
- 5 Year Warranty on Tool, Battery & Charger



The **SL-630** is a battery operated, dieless compression tool used to compress Anderson style lugs. 6.2 tons of compression force is achieved when the tool advances and bypasses at the predetermined pressure. Advance and retract buttons on the tool handle allow for one hand operation, freeing the other hand to maneuver the cable.

***NOTE:** The tool is designed to crimp Anderson Style connectors. Other brand connectors manufactured to ANSI specifications C119.4 can be used. For range-taking connectors, the cable must be maximum size specified for the connector. Consult your connector manufacturer for dieless applications.



SL-750

6.2 Ton Streamline Dieless Compression Tool

Features

- Four-Sided Dieless Crimp System
- *Designed to Crimp Anderson Connectors & other Brand Connectors Manufactured to ANSI C119.4
- Eliminates the Need for Dies
- Rotational Head
- Bright White, LED Lights for Working in Low Light Conditions
- Audible Bypass when Predetermined Pressure is Achieved
- Flip-Top Head Design
- Tested Up to 75kV
- 5 Year Warranty on Tool, Battery & Charger

Specifications

Output	6.2 Ton
Weight	10.5 lbs. with Battery
Size	5.5"L x 21.5"H x 2.7"W
Jaw Opening	1.5"

Crimping Estimates

	BP-84
4/0 Cu	90
500 MCM Cu	110

Connector Range

*Lugs and Splices	#6 AWG - 750 MCM Al/Cu
-------------------	------------------------

The **SL-750** is a flip-top, dieless tool used to crimp cables up to 750 MCM. The flip top latch opens to allow for easy cable positioning and removal. The dieless system is used for non-tension splices and terminations. There is one stationary and three movable indenting nibs which close at 90° angles to each other so that the connector is squeezed equally at four strategic points with 6.2 ton of force. The top can be unlatched to accommodate larger size lugs and cables up to 750 MCM. Typical applications include in-line splicing connectors and lug terminations.

***NOTE:** The tool is designed to crimp Anderson Style connectors. Other brand connectors manufactured to ANSI specifications C119.4 can be used. For range-taking connectors, the cable must be maximum size specified for the connector. Consult your connector manufacturer for dieless applications.

REC-6750

6.2 Ton Dieless Compression Tool



Features

- Four-Sided Dieless Crimp System
- *Designed to Crimp Anderson Connectors & Other Brand Connectors Manufactured to ANSI C119.4
- Eliminates the Need for Dies
- One Hand Operation
- Tested Up to 75kV
- Rotational Head
- Rapid Advance
- Ergonomically designed for Balance and Grip
- Weather Resistant Housing
- Audible Bypass when Predetermined Pressure is Achieved
- Flip-Top Head Design
- 5 Year Warranty on Tool, Battery & Charger

Specifications

Output	6.2 Ton
Weight	11.7 lbs. with Battery
Size	16.5"L x 10.8"H x 3.1"W
Jaw Opening	1.5"

Crimping Estimates

	BP-84
4/0 Cu	90
500 MCM Cu	110

Connector Range

*Lugs and Splices	#6 AWG - 750 MCM Cu/Al
-------------------	------------------------

The **REC-6750** is a flip-top, dieless tool used to crimp cables up to 750 MCM. The flip-top latch opens to allow for easy cable positioning and removal. The dieless system is used for non-tension splices and terminations. There is one stationary and three movable indenting nibs which close at 90° angles to each other so that the connector is squeezed equally at four strategic points with 6 tons of force. Typical applications include in-line splicing connectors and lug terminations.

***NOTE:** The tool is designed to crimp Anderson Style connectors. Other brand connectors manufactured to ANSI specifications C119.4 can be used. For range-taking connectors, the cable must be maximum size specified for the connector. Consult your connector manufacturer for dieless applications. It also has an external bypass cartridge for pressure adjustment & repair uses.



REC-6630

6.2 Ton Dieless Compression Tool

Specifications

Output	6.2 Ton
Weight	11.3 lbs. with Battery
Size	16.1"L x 10.7"H x 3.1"W
Jaw Opening	.90"

Crimping Estimates

	BP-84
4/0 Cu	90
500 MCM Cu	110

Connector Range

*Lugs and Splices	#6 AWG - 500 MCM Al/Cu
-------------------	------------------------

Features

- *Designed to Crimp Anderson Connectors & Other Brand Connectors Manufactured to ANSI C119.4
- Rapid Advance
- One Hand Operation
- Tested Up to 75kV
- Rotational Head
- Ergonomically Designed for Balance and Grip
- Weather Resistant Housing
- Audible Bypass when Predetermined Pressure is Achieved
- Eliminates the Need for Dies
- 5 Year Warranty on Tool, Battery & Charger



The **REC-6630** is a battery operated, dieless compression tool used to compress Anderson style lugs. Six tons of compression force are achieved when the tool advances and bypasses at the predetermined pressure. Advance and retract buttons on the tool handle allow for one hand operation, freeing the other hand to maneuver the cable.

***NOTE:** The tool is designed to crimp Anderson Style connectors. Other brand connectors manufactured to ANSI specifications C119.4 can be used. For range-taking connectors, the cable must be maximum size specified for the connector. Consult your connector manufacturer for dieless applications. It also has an external bypass cartridge for pressure adjustment & repair uses.

REC-6430

12 Ton Compression Tool

Specifications

Output	12 Ton
Weight	11.1 lbs. with Battery
Size	16.9"L x 11.1"H x 3.3"W
Jaw Opening	1.2"

Crimping Estimates

	BP-84
500 MCM Cu	60
750 MCM Cu	45

Connector Range

Lugs	750 MCM Cu/Al
Splices	600 MCM Cu/Al

Features

- One Hand Operation
- Tested Up to 75kV
- Rotational Head
- Rapid Advance
- Bright White, LED Lights for Working in Low Light Conditions
- Ergonomically designed for Balance and Grip
- Weather Resistant Housing
- Audible Bypass when Predetermined Pressure is Achieved
- Protective Rubber Boot on "C" Head For Brush Contact
- 5 Year Warranty on Tool, Battery & Charger



The **REC-6430** was specifically designed for use in single-handed operation in overhead applications such as cable trays. This allows one hand to control the work while the other hand is free to operate the tool. It also eliminates the cumbersome hoses and larger, heavier tools traditionally used in overhead work.

The REC-6430 accepts all 12 ton "U" type dies and is capable of 750 MCM copper lugs and 600 MCM copper splices.

REC-6510

12 Ton Compression Tool



Features

- One Hand Operation
- Tested Up to 75kV
- Rotational Head
- Bright White, LED Lights for Working in Low Light Conditions
- Rapid Advance
- Ergonomically Designed for Balance and Grip
- Weather Resistant Housing
- Audible Bypass when Predetermined Pressure is Achieved
- Protective Rubber Boot on "C" Head For Brush Contact
- 5 Year Warranty on Tool, Battery & Charger

Specifications

Output	12 Ton
Weight	15.9 lbs. with Battery
Size	17.8"L x 11.1"H x 3.3"W
Jaw Opening	1.65"

Crimping Estimates

	BP-84
4/0 Cu	90
500 MCM Cu	60

Connector Range

Lugs and Splices	Up to 750 MCM Cu/Al
------------------	---------------------

The **REC-6510** was specifically designed for use in single-handed operation in overhead applications such as cable trays. This allows one hand to control the work while the other hand is free to operate the tool. It also eliminates the cumbersome hoses and larger, heavier tools traditionally used in overhead work. The REC-6510 has the same jaw opening as our REC-3510 battery operated 12-ton compression tool. The opening is 1.65" which will accept mid-span copper and aluminum splices and lugs up to 750 MCM Cu/Al. This tool accepts all "U" type dies available on the market. Portability and handling are made easier because the REC-6510 system is self-contained and compact. The new rapid advance system reduces tool run time, giving you more crimp cycles per battery charge.

REC-6510K

12 Ton Compression Tool



Features

- Utilizes Kearney Type Dies
- One Hand Operation
- Tested Up to 75kV
- Rotational Head
- Bright White, LED Lights for Working in Low Light Conditions
- Rapid Advance
- Ergonomically Designed for Balance and Grip
- Weather Resistant Housing
- Audible Bypass when Predetermined Pressure is Achieved
- Protective Rubber Boot on "C" Head For Brush Contact
- 5 Year Warranty on Tool, Battery & Charger

Specifications

Output	12 Ton
Weight	13.5 lbs. with Battery
Size	17.1"L x 11.2"H x 3.1"W

Crimping Estimates

	BP-84
500 MCM Cu	60
750 MCM Cu	45

Connector Range

Lugs	1033 ACSR
Splices	477 ACSR

The **REC-6510K** battery powered compression tool is designed to accept Kearney WH-2, PH-2 and WH-3 style dies. Weighing just 16.1 pounds it was specifically designed for use in single-handed operation in overhead applications such as cable tray. It also eliminates the cumbersome hoses and larger, heavier tools traditionally used in overhead work. The REC-6510K has a full 12-ton capacity and its 1.5 inch jaw opening accepts lugs up to 1033 MCM. Compression head rotates 350° for use in any position.



SL-1000

12 Ton Streamline Dieless Compression Tool

Specifications

Output	12 Ton
Weight	12.5 lbs. with Battery
Size	21" L
Jaw Opening	1.95"

Connector Range

Lugs and Splices	#8 AWG - 1000 MCM Cu #8 AWG - 1000 MCM Al
------------------	--

Features

- Dieless indent-style crimping
- Tested Up to 75kV
- Rotational Head
- Bright White, LED Lights for Working in Low Light Conditions
- Audible Bypass when Predetermined Pressure is Achieved
- Latched Head Design
- Eliminates the Need for Dies
- 5 Year Warranty on Tool, Battery & Charger



The **SL-1000** is the first streamline dieless compression tool that is able to crimp connectors up to 1000 MCM copper and 1000 aluminum. The SL-1000 is the first dieless 12 ton streamline compression tool in the industry featuring a latched head design. The dieless indent style crimping head does not require interchangeable crimping dies. The SL-1000 was ergonomically designed for ease of use in underground applications where pistol grip style tools are difficult to use. The SL-1000 has a release trigger to feather ram for faster crimping cycles and runs off the same Huskie battery that all Huskie Tools use. The new housing design incorporates a rubber inlay on handle which makes gripping the tool easier and more comfortable allowing the operator better tool control.

SL-510

12 Ton Streamline Compression Tool

Specifications

Output	12 Ton
Weight	12.5 lbs. with Battery
Size	19" L x 4.75" H x 3.9" W
Jaw Opening	1.65"

Crimping Estimates

	BP-84
4/0 Cu	90
500 MCM Cu	60

Connector Range

Lugs and Splices	Up to 750 MCM Cu/Al
------------------	---------------------

Features

- Utilizes "U" Type Dies
- 12 Ton Streamline Tool
- Tested Up to 75kV
- Rotational Head
- Bright White, LED Lights for Working in Low Light Conditions
- Rubber Boot on Compression Head
- Rapid Advance
- Audible Bypass when Predetermined Pressure is Achieved
- 5 Year Warranty on Tool, Battery & Charger



The **SL-510** is the first 12 ton streamline compression tool in the industry. The new SL-510 will deliver 12 tons of compression force, utilizing all industry standard "U" dies. The capacity of the tool is the same as the pistol grip REC-6510, capable of accepting lugs and splices up to 750 MCM. Utilizing the streamline design and replacing the traditional "C" head with a smaller, lightweight, latched head design makes the new SL-510 the lightest 12 ton tool on the market today. The new housing design incorporates a rubber over-mold handle grip area allowing the operator better tool control.



SL-C510

12 Ton Streamline Compression Tool With "C" Head

Features

- Open C-Head Design
- Utilizes "U" Type Dies
- 12 Ton Streamline Tool
- Tested Up to 75kV
- Rotational Head
- Rubber Boot on Compression Head
- Rapid Advance
- Bright White, LED Lights for Working in Low Light Conditions
- Audible Bypass when Predetermined Pressure is Achieved
- 5 Year Warranty on Tool, Battery & Charger

Specifications

Output	12 Ton
Weight	16 lbs. with Battery
Size	19"L x 4.75"H x 3.9"W
Jaw Opening	1.65"

Crimping Estimates

	BP-84
4/0 Cu/Al	90
500 MCM Cu	60

Connector Range

Lugs and Splices	Up to 750 MCM Cu/Al
------------------	---------------------

The **SL-C510** is the first 12 ton streamline compression tool in the industry. The SL-C510 has all the same features as the SL-510 but replaces the latched head design with a "C" head. The capacity of the tool is the same as the pistol grip REC-6510, capable of accepting lugs and splices up to 750 MCM.

The new housing design incorporates a rubber over-mold handle grip area allowing the operator better tool control. If you are looking for a streamline tool that incorporates the "C" head design, the SL-C510 is the perfect addition to any utility truck.



SL-510K

12 Ton Steamline Compression Tool with "C" Head

Features

- Utilizes Kearney Type Dies
- 12 Ton Streamline Tool
- One Hand Operation
- Tested Up to 75kV
- Rotational Head
- Bright White, LED Lights for Working in Low Light Conditions
- Rubber Boot on Compression Head
- Rapid Advance
- Audible Bypass when Predetermined Pressure is Achieved
- 5 Year Warranty on Tool, Battery & Charger

Specifications

Output	12 Ton
Weight	13.5 lbs. with Battery
Size	19"L x 4.75"H x 3.9"W

Crimping Estimates

	BP-84
4/0 Cu	90
500 MCM Cu	60

Connector Range

Lugs	Up to 1033 MCM
Splices	Up to 477 ACSR

The **SL-510K** battery powered compression tool is designed to accept Kearney WH-2, PH-2 and WH-3 style dies. Weighing just 16.1 pounds it was specifically designed for use in single-handed operation in overhead applications such as cable tray. It also eliminates the cumbersome hoses and larger, heavier tools traditionally used in overhead work.

The SL-510K has a full 12-ton capacity and its 1.5 inch jaw opening accepts lugs up to 1033 MCM. Compression head rotates 180° for use in any position.



SL-610

15 Ton Streamline Compression Tool

Specifications

Output	15 Ton
Weight	16.5 lbs. with Battery
Size	25" L x 4" H x 5" W
Jaw Opening	2"

Crimping Estimates

	BP-84
1000 MCM Cu	40

Connector Range

Aluminum	#8 AWG - 1250 MCM
Copper	#8 AWG - 1500 MCM
H-Tap	Up to 750/750

Optional Accessories

PU-15 "U" Die Adapter

Features

- Utilizes "P" Type Dies
- Tested Up to 75kV
- Rotational Head
- Bright White, LED Lights for Working in Low Light Conditions
- Rapid Advance
- Audible Bypass when Predetermined Pressure is Achieved
- Protective Rubber Boot on Head
- Flip-Top Rotating Head
- 5 Year Warranty on Tool, Battery & Charger



The **SL-610** is the first 15 ton compression tool built on Huskie's Streamline platform. The new SL-610 will deliver 15 tons of compression force, utilizing all industry standard "P" dies. The "U" die adapter, PU-15, can be utilized to implement the standard "U" type die. The capacity of the tool is the same as the REC-3610, capable of accepting lugs up to 1500MCM copper and 1250MCM Aluminum.

Utilizing the streamline design with a smaller, lightweight, latched head design makes the new SL-610 the lightest 15 ton tool on the market today. The new housing design incorporates a rubber over-mold handle grip as well an optional handle allowing the operator better tool control.

SL-C610

15 Ton Streamline Compression Tool

Specifications

Output	15 Ton
Weight	20 lbs. with Battery
Size	23" L x 3.5" H x 4.5" W
Jaw Opening	2"

Crimping Estimates

	BP-84
1000 MCM Cu	50

Connector Range

Aluminum	#8 AWG - 1250 MCM
Copper	#8 AWG - 1500 MCM
H-Tap	Up to 750/750

Optional Accessories

PU-15 "U" Die Adapter

Features

- Utilizes "P" Type Dies
- Tested Up to 75kV
- Open C Head Design
- Rotational Head
- Rapid Advance
- Bright White, LED Lights for Working in Low Light Conditions
- Audible Bypass when Predetermined Pressure is Achieved
- Protective Rubber Boot on Head
- 5 Year Warranty on Tool, Battery & Charger



The **SL-C610** is the first 15 ton compression tool built on Huskie's Streamline platform. The new SL-C610 will deliver 15 tons of compression force, utilizing all industry standard "P" dies. The "U" die adapter, PU-15, can be utilized to implement the standard "U" type die. The capacity of the tool is the same as the REC-3610, capable of accepting lugs up to 1500MCM copper and 1250MCM Aluminum.

The new housing design incorporates a rubber over-mold handle grip as well an optional handle allowing the operator better tool control.

REC-3410

12 Ton Compression Tool



Features

- Tested Up to 75kV
- Rotational Head
- Rapid Advance
- Ergonomically Balanced
- Weather Resistant Housing
- Audible Bypass when Predetermined Pressure is Achieved
- Includes DIE-CASE
- Protective Rubber Boot on "C" Head For Brush Contact
- 5 Year Warranty on Tool, Battery & Charger

Specifications

Output	12 Ton
Weight	19 lbs. with Battery
Size	18"L x 10.5"H x 3.5"W
Jaw Opening	1"

Crimping Estimates

	BP-84
4/0 Cu	90
500 MCM Cu	60

Connector Range

Lugs	#8 AWG - 750 MCM Cu #10 AWG - 750 MCM Al
Splices	#8 AWG - 400 MCM Cu #10 AWG - 400 MCM Al

Huskie Tools is giving you more tool speed and easier handling with our **REC-3410** battery powered compression tool. It features a rubber boot and it is designed to accommodate all 12 ton "U" type dies widely used throughout the electrical industry.

The REC-3410 is faster and more compact than our previous model. It offers a wider handle opening with finger grooves, allowing easier access for gloved work. The base of the tool is contoured for stability and incorporates finger grooves for a better grip.

REC-3510

12 Ton Compression Tool



Features

- UL Classified
- Tested Up to 75kV
- Rotational Head
- Rapid Advance
- Ergonomically Balanced
- Weather Resistant Housing
- Audible Bypass when Predetermined Pressure is Achieved
- Includes DIE-CASE
- Protective Rubber Boot on "C" Head For Brush Contact
- 5 Year Warranty on Tool, Battery & Charger

Specifications

Output	12 Ton
Weight	20 lbs. with Battery
Size	19"L x 10.5"H x 3.5"W
Jaw Opening	1.65"

Crimping Estimates

	BP-84
500 MCM Cu	60
750 MCM Cu	45

Connector Range

Lugs and Splices	#8-750 MCM Cu #10-750 MCM Al
------------------	---------------------------------

The **REC-3510** is the most versatile tool in our line of battery operated 12 ton compression tools. The jaw opening is 1.65" and will accept mid-span copper and aluminum splices and lugs up to 750 MCM Cu/Al. When the sleeves are compressed they can be removed through the large jaw. This tool accepts all "U" type dies available on the market.

A built-in, preset 10,000 psi bypass cartridge will audibly bypass when optimal pressure is achieved. Test dies accompanied with our PG-510 can confirm the output pressure when needed. The output pressure can be adjusted via a bypass port located at the top of the tool. This tool has the most universal range of all our self-contained ROBO*Tools.



REC-3510K

12 Ton Compression Tool

Specifications

Output	12 Ton
Weight	20 lbs. with Battery
Size	19"L x 10.5"H x 3.5"W
Jaw Opening	1.5"

Crimping Estimates

	BP-84
500 MCM Cu	70
750 MCM Cu	55

Connector Range

Lugs	Up to 1033 ACSR
Splices	Up to 477 ACSR

Features

- Tested Up to 75kV
- Rotational Head
- Rapid Advance
- Ergonomically Balanced
- Weather Resistant Housing
- Audible Bypass when Predetermined Pressure is Achieved
- Includes DIE-CASE
- Protective Rubber Boot on "C" Head For Brush Contact
- 5 Year Warranty on Tool, Battery & Charger



The **REC-3510K** battery powered compression tool is designed to accept Kearney WH-2, PH-2, and WH-3 style dies. It has a full 12 ton capacity and its 1.5" jaw opening accepts lugs up to 1033 MCM. The upgraded REC-3510K is faster and more compact than our previous model. It offers a wider handle opening with finger grooves, allowing easy access for gloved work. The base of the tool is contoured for stability and ease of use.

REC-3610

15 Ton Compression Tool

Specifications

Output	15 Ton
Weight	24 lbs. with Battery
Size	21.5"L x 10.5"H x 3.5"W
Jaw Opening	2"

Crimping Estimates

	BP-84
1000 MCM Cu	40

Connector Range

Aluminum	#8 AWG - 1250 MCM
Copper	#8 AWG - 1500 MCM
H-Tap	Up to 750/750

Optional Accessories

PU-15 "U" Die Adapter

Features

- Tested Up to 75kV
- Rotational Head
- Rapid Advance
- Ergonomically Balanced
- Weather Resistant Housing
- Audible Bypass when Predetermined Pressure is Achieved
- Includes DIE-CASE
- Protective Rubber Boot on Head
- Flip-Top Rotating Head
- External Pressure Adjustment
- 5 Year Warranty on Tool, Battery & Charger



The **REC-3610** battery powered 15 ton compression tool utilizes "P" type dies to crimp splices and lugs up to 1250 MCM aluminum and 1500 MCM copper. The REC-3610 offers a wide handle opening with finger grooves, allowing easy access for gloved work.

The base of the tool is also contoured for stability and ease of use. The tool has a latched head that incorporates a pull-out release pin that cannot be entirely removed from the jaw. The 2" jaw opening accepts all "P" type dies used in the industry today. The PU-15 die adapter is available for use with all 12 ton "U" type dies.

CN-258

6 Ton Compression Tool with Rubber Boot



Features

- Two-Stage Rapid Advance
- External Pressure Adjustment

Specifications

Output	6 Ton
Weight	8.5 lbs.
Size	21" L
Jaw Opening	.95"

Connector Range

Lugs	#6-500 MCM Cu
Splices	#6-300 MCM Al
H-Taps	4/0-4/0

Huskie's **CN-258** is used for service entrance connections up to 4/0, and its bypass cartridge assures all compressions. A two-stage, rapid advance pumping system saves compression strokes and time. The nest dies are D-3, and can be changed with other Kearney "O" type dies. If you wish to use Burndy "W" type dies, simply slip the "W" type over the D-3 nest die and snap them into the locked position. Huskie Tools carries a wide range of market equivalent dies. Pressure can be checked with Huskie's PG-15 pressure gauge. The tool comes complete with a carrying case.

EP-630A

6.2 Ton Dieless Compression Tool



Features

- *Designed to Crimp Anderson Connectors & other Brand Connectors Manufactured to ANSI C119.4
- Two-Stage Rapid Advance
- External Pressure Adjustment

Specifications

Output	6.2 Ton
Weight	11.5 lbs.
Size	22" L
Jaw Opening	.9"
Center Opening	1.25"

Connector Range

*Lugs and Splices	#6 AWG - 500 MCM Cu/ Al
-------------------	-------------------------

The **EP-630A** is commonly used by electric utilities and contractors who prefer dieless compression to circumferential compression. The operator simply positions a connector in the jaws and pumps until the tool bypasses at 6.2 tons of output. Three moveable nibs crimp the connector against a fourth stationary nib. A carrying case is included.

*The EP-630A was designed to crimp Anderson style connectors, and other brand connectors manufactured to ANSI C119.4.

EP-750A

6.2 Ton Flip-Top Dieless Compression Tool



Features

- *Designed to Crimp Anderson Connectors & Other Brand Mfg. to ANSI C119.4
- Rapid Advance
- Flip-Top Head Design
- Eliminates the Need for Dies

Specifications

Output	6.2 Ton
Weight	11.5 lbs.
Size	23" L
Jaw Opening	1.5"

Connector Range

*Lugs and Splices	#6 AWG - 750 MCM Al/Cu
-------------------	------------------------

The **EP-750A** operates the same as the EP-630A, but has a larger connector/cable capacity. Larger cables can be inserted and easily removed by opening the flip-top head. A carrying case is included.

*The EP-750A was designed to crimp Anderson style connectors, and other brand connectors manufactured to ANSI C119.4.



Specifications	
Output	12 Ton
Weight	11.5 lbs.
Size	23"L
Jaw Opening	1"

Connector Range	
Lugs	Up to 750 MCM Cu
Splices	Up to 400 MCM Cu

EP-410

12 Ton Compression Tool with Rubber Boot

Features

- Protective Rubber Boot on "C" Head
- External Pressure Adjustment



The **EP-410**, hand operated, compression tool features a two stage rapid advance pumping system. It accepts all U-type dies currently manufactured for 12 ton tools on the market. Consult your connector manufacturer for exact cable, connector, and die combinations. Huskie stocks a variety of dies, simply specify the manufacturer's die and connector numbers when contacting your dealers.

Specifications	
Output	12 Ton
Weight	13.5 lbs.
Size	24"L
Jaw Opening	1-3/16"

Connector Range	
Lugs	Up to 750 MCM Cu
Splices	Up to 600 MCM Cu

EP-430

12 Ton Compression Tool with Rubber Boot

Features

- Protective Rubber Boot on "C" Head
- External Pressure Adjustment



The **EP-430** is unique in that it has a large jaw opening of 1-3/16" and is able to splice up to 600 MCM. This tool was designed for the electrical contractor or electric utility lineman who is confronted with larger cable diameters and larger connectors. Similar competitive tools are limited to a .95" jaw opening that drastically reduces their connecting range. Most internal hydraulic components are the same as the EP-410 and EP-510.

EP-510C

12 Ton Compression Tool with Rubber Boot

Specifications	
Output	12 Ton
Weight	16.5 lbs.
Size	25"L
Jaw Opening	1.65"

Connector Range	
Lugs and Splices	Up to 750 MCM Cu & Al

Features

- Protective Rubber Boot on "C" Head
- External Pressure Adjustment
- UL Classified



Huskie's **EP-510C** was engineered to accommodate all U-type dies currently used in existing 12 ton tools. It is one of Huskie's most versatile tools since it takes a full range of connectors and lugs to 750 MCM. The jaw opening is 1.65" to accept larger splices up to 750 MCM. The EP-510C output tonnage is adjustable to 14 tons for some specific grounding applications.

EP-510K

12 Ton Compression Tool with Rubber Boot



Features

- Protective Rubber Boot on "C" Head
- External Pressure Adjustment

Specifications

Output	12 Ton
Weight	17 lbs.
Size	26" L
Jaw Opening	1.5"

Connector Range

Lugs	Up to 1033 MCM Stranded
Splices	477 ACSR

The Huskie **EP-510K** was designed to accept Kearney dies commonly used in their models WH-2, PH-2, and WH-3 hydraulic tools. It features our exclusive replaceable bypass cartridge to facilitate shop repairs and eliminate costly down time. A carrying case is included. Tool output tonnage can be determined by using our model PG-510 pressure gauge with model TDK-1.

CN-58H

6 Ton Remote Compression C-Head -Rubber Boot



Features

- 3/8" Male Screw Type Coupler Provided
- Protective Rubber Boot on "C" Head

Specifications

Output	6 Ton
Weight	6 lbs.
Size	12" L
Jaw Opening	.95"

Connector Range

Lugs	#6-500 MCM Cu
Splices	#6-4/0 Al
H-Taps	4/0-4/0 Al

The **CN-58H** remote operated "C" head requires an external pumping source of 10,000 psi. It accepts Kearney "O" type and Burndy "W" type dies. It is a service entrance compression tool and the smallest of our compression tool line. The head is lightweight for easy handling in hot stick applications. The tool is supplied with a 3/8" male screw type coupler and a carrying case.

EP-630HA

6.2 Ton Dieless Remote C Head -Rubber Boot



Features

- *Designed to Crimp Anderson Connectors & Other Brand Mfg. to ANSI C119.4
- Eliminates the Need for Dies
- Protective Rubber Boot on "C" Head

Specifications

Output	6.2 Ton
Weight	6.5 lbs.
Size	10" L with Coupler
Jaw Opening	.9"
Center Opening	1.25"
Width	4.5"

Connector Range

*Lugs and Splices	#10 AWG - 500
-------------------	---------------

The **EP-630HA** is a dieless remote head that requires an external 10,000 psi pumping source. It is designed to crimp Anderson connectors #10 str - 500 MCM bare Al and #10 sol - 500 MCM bare Cu. The EP-630HA is mostly used by electrical contractors who prefer dieless compression to circumferential compression. This tool is supplied with a 3/8" male, screw type coupler and carrying case.

*The EP-630HA was designed to crimp Anderson style connectors, and other brand connectors manufactured to ANSI C119.4.



EP-750HA

6.2 Ton Flip-Top Dieless Remote C- Head

Specifications

Output	6.2 Ton
Weight	6.5 lbs.
Size	10.5"L with Coupler
Width	5.5"
Jaw Opening	1.5"

Connector Range

*Lugs and Splices	#10 AWG - 750 MCM Cu/Al
-------------------	-------------------------

Features

- *Designed to Crimp Anderson Connectors & Other Brand Mfg. to ANSI C119.4
- Flip-Top Head Design
- Eliminates the Need for Dies



The Huskie **EP-750HA** dieless, Anderson style head has a flip-top opening and a pull-pin locking mechanism to accept larger connectors up to 750 MCM. Output force is 6.2 tons, and 10,000 psi external pumping source is required. The EP-750HA is supplied with a 3/8" male, screw type coupler and a carrying case.

*The EP-750HA was designed to crimp Anderson style connectors, and other brand connectors manufactured to ANSI C119.4.

EP-410H

12 Ton Remote Compression C-Head - Rubber Boot

Specifications

Output	12 Ton
Weight	8.2 lbs.
Size	10"L
Jaw Opening	1"

Connector Range

Lugs	#8 - 750 MCM Cu
Splices	#10 - 400 MCM Cu

Features

- Protective Rubber Boot on "C" Head



The **EP-410H** is a traditional C-head with a one-inch jaw opening. It will accept all "U" type dies currently used in 12 ton tools on today's market. A 10,000 psi external pump is required to operate the C-head. The output pressure is 12 tons when the pump is set at 10,000 psi. After a compression is made on a lug or sleeve, an internal ram spring retracts the jaw when the pump pressure is relieved. The tool is supplied with a standard 3/8" male, screw type coupler but can be fitted with an opposite female coupler if requested. Carrying case included. When using any of these high-pressure tools, always use 10,000 psi rated non-conductive hose (NC-16 series).

EP-410HT

12 Ton Remote Titanium Compression C-Head

Specifications

Output	12 Ton
Weight	5 lbs.
Size	10"L
Jaw Opening	1"

Connector Range

Lugs	#8-750 MCM Cu
Splices	#10-400 MCM Cu

Features

- Extremely Lightweight Titanium
- Hot Stick Applications



The unique, lightweight titanium head of the **EP-410HT** reduces its weight to just five pounds. This is an ideal weight for Hot Stick handling since it is easy to lift and effortless to control while making connections. Though more expensive than conventional 12 ton tools, operator preference and performance when handling this tool will save time and investment over the life of the product. The tool is supplied with a standard 3/8" male, screw type coupler but can be fitted with an opposite female coupler if requested. A carrying case is included. When using any of these high-pressure tools, always use 10,000 psi rated non-conductive hose (NC-16 series).

EP-430H

12 Ton Remote Compression C-Head - Rubber Boot



Features

- Protective Rubber Boot on "C" Head

Specifications

Output	12 Ton
Weight	10 lbs.
Size	11" L
Jaw Opening	1.2"

Connector Range

Lugs	Up to 750 MCM Cu
Splices	Up to 600 MCM Cu

The **EP-430H** is a remote C-head that requires an external 10,000 psi pumping source for operation. This unit has a larger jaw opening than our EP-410H. The 1-3/16" opening allows the user to compress larger splices up to 600 MCM. The EP-430H is a single-acting, spring return tool. Its trim design allows for easy handling in field applications. This unit is supplied with a 3/8" male, screw type coupler, metal carrying case and die tray. We recommend the use of our non-conductive, high pressure hose. The EP-430H accepts "U" type dies designed to fit all 12 ton tools. Unique features include a knurled handle shank, a pull die release button on top of the C-head, and a push button die release on the opposite jaw.

EP-510HC

12 Ton Remote Compression C-Head - Rubber Boot



Features

- Protective Rubber Boot on "C" Head

Specifications

Output	12 Ton
Weight	11 lbs.
Size	12.25" L
Jaw Opening	1.65"

Connector Range

Lugs and Splices	Up to 750 MCM Cu
------------------	------------------

The **EP-510HC** is a remote C-head that requires an external 10,000 psi pumping source. It accepts all "U" type dies used with conventional 12 ton compression tools. The larger jaw opening of 1.65" accepts conductors and mid-span sleeve connections up to 750 MCM. The EP-510HC is supplied with a screw type, 3/8" male coupler, metal carrying case, and die tray. We recommend the use of our non-conductive high pressure hose.

EP- 510HK

12 Ton Remote Compression C-Head - Rubber Boot



Features

- Protective Rubber Boot on "C" Head

Specifications

Output	12 Ton
Weight	13.5 lbs.
Size	14" L
Jaw Opening	1.5"

Connector Range

Lugs	Up to 1033 MCM Stranded
Splices	477 ACSR

The **EP-510HK** is a Kearney style tool which accepts PH-2, WH-2, and WH-3 style dies. It has 12 tons of output and is used for crimping up to 750 MCM lugs or splices. An external 10,000 psi pumping source is needed to develop 12 tons of compression force. The EP-510HK comes complete with a 3/8" male, screw type coupler and carrying case. When using any of these high-pressure tools, always use 10,000 psi rated non-conductive hose (NC-16 series).



Specifications

Output	15 Ton
Weight	14.5 lbs.
Size	14.5"L
Jaw Opening	2"

Connector Range

Aluminum	#8 AWG - 1250 MCM
Copper	#8 AWG - 1500 MCM

Optional Accessories

PU-15 "U" Die Adapter

EP-610H

15 Ton Remote Compression
C- Head - 2" Jaw Opening

Features

- 3/8" Male Screw Type Coupler Provided
- Protective Rubber Boot on "C" Head



The **EP-610H** is a remote C-head that requires an external 10,000 psi pumping source. It accepts all Huskie HT61 series and Burndy "P" type dies used in the Y-46. When used with a Huskie PU-15 die adapter it will accept all "U" type dies used with any 12 ton tool. This tool is primarily used for cables above 750 MCM or in cases where additional tonnage is required to compress larger lugs, terminals and sleeves on tension connections. It is most always used on larger underground cables up to 1000 MCM. The EP-610H is supplied with a 3/8" male, screw type coupler and carrying case. When using any of these high-pressure tools, always use 10,000 psi rated non-conductive hose (NC-16 series).

EP-60WA (Steel), EP-60WT (Titanium)

60 Ton Single Acting Compression Head

Specifications

Output	60 Ton
Weight	43.5 lbs. (Steel) 34 lbs. (Titanium)
Size	6"W x 17"H
Cable Capacity	2.4" O.D.
Die Style	HA60-Series
Ram Stroke	1.5" Travel
Oil Volume	312 cc

Connector Range

Lugs	Up to 2000 MCM Cu/Al
Splices	Up to 2500 MCM Cu/Al

Order Data

EP-60WB	60 Ton Single Acting Compression Head
EP-60WT	Titanium Model

Features

- Removable Base
- Oblong lifting ring
- Removable Die Cap for Easy Cable Insertion
- Designed for ACSR & ACAR Transmission and Distribution Cable
- Lightest 60 Ton Presses in the Industry
- Ultra Light Titanium Model Available
- Extremely Portable



The **EP-60WA** is the lightest single acting 60 ton press in the industry that is designed to compress sleeves and lugs on ACSR and ACAR transmission and distribution cables. They are also ideal for substation construction and are operable from any 10,000 psi pumping source with proper oil capacity. These tools are made to be portable for easy maneuverability, unlike other brands. The EP-60WB can be operated, utilizing the oblong lifting ring with use of a lifting rig. The EP-60WA series will readily accept any shell type dies currently used with Alcoa or Burndy 60 ton presses. Dies not listed can be made to specification; consult Huskie for more information.

The EP-60WA series is also offered in titanium. Titanium has the strength of steel but weighs nearly 30 percent less. Due to its lighter weight and the tool's portable design, the chance of back and muscle strain is greatly reduced. The titanium 60 ton press is easily maneuvered where heavy steel presses are almost impossible to operate, making it an ideal tool for jobs such as helicopter line installations.

NOTE: When using any of these high-pressure tools, always use 10,000 psi rated non-conductive hose (NC-16 series).

EP-60D (Steel), EP-60DT (Titanium)

60 Ton Double Acting Compression Head



Features

- Removable Base
- Oblong lifting ring
- Removable Die Cap for Easy Cable Insertion
- Designed for ACSR & ACAR Transmission and Distribution Cable
- Double Acting Hydraulic Cylinder for Quicker Return Times
- Ultra Light Titanium Model Available
- Extremely Portable

Specifications

Output	60 Ton
Weight	47 lbs. (Steel) 34 lbs. (Titanium)
Size	6"W x 17"H
Cable Capacity	2.4" O.D.
Die Style	HA60-Series
Ram Stroke	1.5" Travel
Oil Volume	303 cc

Connector Range

Lugs	Up to 2000 MCM Cu/Al
Splices	Up to 2500 MCM Cu/Al

Order Data

EP-60D	60 Ton Double Acting Compression Head
EP-60DT	Titanium Model

The **EP-60D** series is a double acting 60 ton compression head. Double acting tools will eliminate the possibility of the tool jamming. Double acting means hydraulically advancing the ram to build the proper tonnage, then the hydraulic pressure is reversed to retract the ram. This will ensure the ram to retract without having to pry the jaws apart to release them and it will also retract much faster than single acting spring release tools.

The Titanium version EP-60DT, has the strength of steel but weighs nearly 30% less. Due to its lighter weight and the tool's portable design, the chance of back and muscle strain is greatly reduced. The titanium 60 ton press is easily maneuvered where heavy steel presses are almost impossible to operate making it an ideal tool for jobs such as helicopter line installations.

NOTE: When using any of these high-pressure tools, always use 10,000 psi rated non-conductive hose (NC-16 series).

EP-100WD

Double Acting, 100 Ton Compression Head



New Recessed Bottom Lifting Ring

Specifications

Output	100 Ton
Weight	78 lbs.
Size	9.5"W x 15"H
Max. Pressure	10,000 psi
Oil Required	25 cu/in
Ram Stroke	1.16"

Features

- Designed for Full Tension Transmission and Substation Connections
- Double Acting Hydraulic Cylinder for Quicker Return Times
- Lightest Weight Model in its Class
- Removable Die Cap for Easy Cable Insertion

The **EP-100WD** and **EP-200WA** are 100 and 200 ton compression heads for full tension, transmission and substation connections and require an external 10,000 psi pumping source. The EP-100WD will accept shell-type dies currently used with Alcoa 100 ton compression heads. This double acting compression head is designed to operate from Huskie Tools pump models R-14EAD, HPG-5 or any 3/4 HP high-pressure, double-acting pump with the proper oil capacity. Double acting means hydraulically advancing the ram to build proper tonnage, then the hydraulic pressure is reversed to retract the ram. This will eliminate all possibilities of the connector hanging up or the tool jamming. The EP-200WA and EP-100WD are the lightest weight models in their class. Both models have removable die caps for easy connector positioning and 3/8" screw-type couplers.

NOTE: When using any of these high-pressure tools, always use 10,000 psi rated non-conductive hose (NC-16 series).





Dies, Batteries & Accessories



HT58-SERIES

Equivalent to Burndy "W" Type Dies for 4-6 Ton Tools

HUSKIE	BURNDY Equivalent	HUSKIE	BURNDY Equivalent
HT58AE	W-K840	HT58DE	W-236
HT58BX	W-161	HT58DG	W-238
HT58BZ	W-162	HT58DH	W-239
HT58CB	W-163	HT58DK	W-241
HT58CD	W-164	HT58DM	W-243
HT58CE	W-165	HT58DP	W-245
HT58CF	W-166	HT58DT	W-247
HT58CG	W-167	HT58DV	W-248
HT58CM	W-171	HT58DW	W-249
HT58G*	W-BG	HT58DY	W-251
HT58J	W-C	HT58KA	W-687
HT58AK	W-O	HT58KH	W-702
HT58CUT	CUTTER	HT58AF	W-L
		HT58K	WKK

HUSKIE	BURNDY Equivalent
HT58AW	W-2CRT
HT58AU	W-4CRT
HT58AT	W-5CRT
HT58AY	W-25RT
HT58AZ	W-26RT
HT58BA	W-27RT
HT58BC	W-28RT
HT58BE	W-29RT
HT58BF	W-30RT
HT58BJ	W-31RT
HT58BK	W-32RT
HT58BL	W-34RT



Features

- Fits All Existing Tools Accepting "W" Type Dies
- Marked with Huskie and Equivalent Burndy "W" Die Number
- Nickel Plated

Huskie 6 Ton Die	Burndy 6 Ton Die	Nicopress
HT58BX	W-161	J
HT58BZ	W-162	M & P
HT58CB	W-163	X
HT58CM	W-171	T

HUSKIE	CSA Equivalent
HT58PA	CSA-20
HT58PB	CSA-22
HT58PC	CSA-24

* HT58G is the only die with a double crimp

HT-SERIES

Equivalent to Kearney "O" Type Dies for 4-6 Ton Tools

HUSKIE	KEARNEY Equivalent	HUSKIE	KEARNEY Equivalent
HT-B	B	HT-510	510 (HEX)
HT-D	D	HT-635	635 (HEX)
HT-D3	D3	HT-747	747 (HEX)
HT-J	J	HT-316	3/16
HT-K	K	HT-14	1/4
HT-O	O	HT-516	5/16
HT-P	P	HT-38	3/8
HT-T	T	HT-12	1/2
HT-737	737	HT-916	9/16
HT-781	781	HT-1932	19/32
HT-840	840	HT-58-1	5/8-1
HT-845	845	HT-1116	11/16

HUSKIE	CSA Equivalent
HTCSA-20	CSA-20
HTCSA-22	CSA-22
HTCSA-24	CSA-24



Features

- Fits All Existing Tools Accepting "O" Type Dies
- Stamped with Kearney Die Size
- Nickel Plated

HT41-SERIES

Equivalent to Burndy and Kearney
"U" Type Dies for 12 Ton Tools



Features

- Fits All Existing Tools Accepting "U" Style Dies
- Marked with Huskie and Equivalent Burndy "U" Die Number, or Alcoa "B" Die Number, or Kearney Die Size
- Die Nest Engraved with Huskie Die Number Suffix

HUSKIE	ALCOA Equivalent	HUSKIE	ALCOA Equivalent	HUSKIE	CSA Equivalent	HUSKIE	CSA Equivalent
HT4107	74SH-03SH	HT4131	72AH	HT41PA	CSA-20	HT41PH	CSA-24CU
HT4108	75SH-05SH	HT4132	73AH-08AH	HT41PB	CSA-22	HT41PI	CSA-26CU
HT4109	76SH	HT4140	07CD	HT41PC	CSA-24	HT41PJ	CSA-28CU
HT4111	11AH	HT4141	08CD	HT41PD	CSA-26	HT41PK	CSA-30WCU
HT4120	20AH-14AH	HT4142	09CD	HT41PE	CSA-28	HT41PM	CSA-1
HT4128	74AH-10AH	HT4155	72SH-01SH	HT41PF	CSA-30W	HT41PN	CSA-2
HT4129	75AH-12AH	HT4156	73SH	HT41PL	CSA-20CU	HT41PZ	CSA-3
HT4130	76AH	HT4180	13AH-80EA	HT41PG	CSA-22CU		

HUSKIE	BURNDY Equivalent	HUSKIE	BURNDY Equivalent	HUSKIE	BURNDY Equivalent	HUSKIE	KEARNEY Equivalent
HT41G	U-BG	HT41DG	U-238	HT41AT	U5CRT	HT41KA	1/4
HT41J	U-C	HT41DH	U-239	HT41AY	U25RT	HT41KB	3/8
HT41V	U-D	HT41DL	U-242	HT41AZ	U26RT	HT41KC	5/16
HT41X	U-D3	HT41DM	U-243	HT41BA	U27RT	HT41KD	1/2
HT41Y	U-E	HT41DP	U-245	HT41BC	U28RT	HT41KE	9/16
HT41Z	U-F	HT41DT	U-247	HT41BE	U29RT	HT41KF	19/32
HT41AB	U-H	HT41DV	U-248	HT41GF	U2CABT	HT41KG	5/8-1
HT41AF	U-L	HT41DW	U-249	HT41GM	U4CABT	HT41KH	11/16
HT41AG	U-M	HT41DY	U-251	HT41GE	U6CABT	HT41KI	3/4
HT41AJ	U-N	HT41DZ	U-252	HT41GL	U8CABT	HT41KK	29/32
HT41AK	U-O	HT41EK	U-261	HT41BF	U30RT	HT41KL	15/16
HT41AM	U-R	HT41FG	U-305	HT41BJ	U31RT	HT41KM	1-2
HT41BX	U-161	HT41FM	U-316	HT41BK	U32RT	HT41KN	1-1/8-2
HT41BZ	U-162	HT41FN	U-317	HT41BL	U34RT	HT41KO	1-1/2-2
HT41CB	U-163	HT41FU	U-321	HT41BM	U36RT	HT41KP	510
HT41CD	U-164	HT41FX	U-327	HT41BP	U39RT	HT41KQ	572
HT41CE	U-165	HT41GK	U-373	HT41EX	U25ART	HT41KR	635
HT41CF	U-166	HT41GX	U-468	HT41EY	U26ART	HT41KS	737
HT41CG	U-167	HT41HM	U-490	HT41GW	U27ART	HT41KT	747
HT41CJ	U-168	HT41JM	U-654	HT41EZ	U28ART	HT41KU	781
HT41CK	U-169	HT41JN	U-655	HT41FW	U29ART	HT41KV	BKT
HT41CL	U-170	HT41JP	U-658	HT41GZ	U30ART	HT41AE	840
HT41CT	U-203	HT41JR	U-659	HT41FA	U31ART	HT41U	U
HT41DE	U-236	HT41KJ	U-705	HT41HH	U32ART	HT41KX	727
HT41DF	U-237	HT41LG	U-788	HT41FB	U34ART		
		HT41NC	U-997	HT41HG	U36ART	UDK-1	U Die Adapter
		HT41AE	U-K840	HT41LJ	U39ART2		
		HT41AX	U1CRT	HT41CUT	Cutter Dies		
		HT41AW	U2CRT	HT41TEST	Test Dies		
		HT41AV	U3CRT				
		HT41AU	U4CRT				

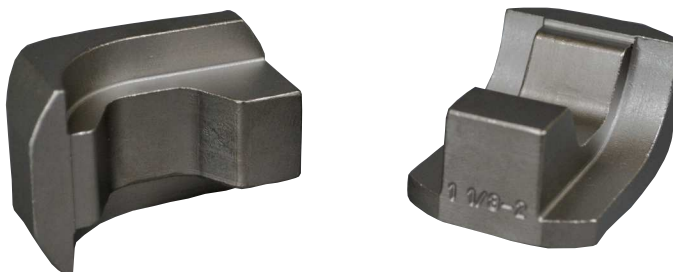


HTK-SERIES

Equivalent to Kearney "WH-2" (10.7 Ton) & "WH-3" (12 Ton) Type Dies

Features

- Stamped with Kearney Die Size
- Nickel Plated



HUSKIE	KEARNEY Equivalent	HUSKIE	KEARNEY Equivalent	HUSKIE	KEARNEY Equivalent	HUSKIE	KEARNEY Equivalent
HTK	BKT	HTK-510	510	HTK-14	1/4	HTK-34H	3/4 (HEX)
HTK-C	C	HTK-572	572	HTK-516	5/16	HTK-2932H	29/32 (HEX)
HTK-D	D	HTK-635	635	HTK-38	3/8	HTK-1516	15/16
HTK-N	N	HTK-727	727	HTK-12	1/2	HTK-1-2H	1-2 (HEX)
HTK-N-2	N (WH-3 Only)	HTK-737	737	HTK-916	9/16	HTK-1-18-2H	1-1/8
HTK-O	O	HTK-747	747	HTK-1932	19/32	HTK-1-516H	1-5/16 (HEX)
HTK-P	P	HTK-781	781	HTK-58-1	5/8-1	HTK-1-12H	1-1/2 (HEX)
HTK-U	U	HTK-840	840	HTK-1116	11/16	HTK-1-12H-3	1-1/2 (WH-3 Only)
						UDK-1	U Die Adapter

HT61-SERIES

Equivalent to Burndy "P" Type Dies for 15 Ton Tools

Features

- Fits All Existing Y46 Heads Accepting "P" Type Dies
- Marked with Huskie and Equivalent Burndy "P" Type Dies
- Polished Die Nest



HUSKIE	BURNDY Equivalent	HUSKIE	BURNDY Equivalent	HUSKIE	CSA Equivalent
HT61BP	P39RT	HT61FC	P39ART	HT61PF	CSA-30
HT61BR	P40RT	HT61HJ	P40ART	HT61PK	CSA-30CU
HT61BU	P44RT	HT61FD	P44ART	HT61PO	CSA-32
HT61BV	P46RT	HT61AC	PKR	HT61PP	CSA-32CU
HT61KX	P-724	HT61AJ	PN	HT61PQ	CSA-34
PU-15	DIE ADAPTER			HT61PR	CSA-34CU

HA60-SERIES

Equivalent to Alcoa 60 Ton Dies



Features

- Fits All Existing 60 Ton Presses Accepting 60 Ton Shell Type Dies
- Marked with Huskie and Equivalent Alcoa Catalog Number

HUSKIE	ALCOA Equivalent	HUSKIE	ALCOA Equivalent
HA60-01	6010SH	HA60-27	6040AH
HA60-02	6012SH	HA60-28	6074AH
HA60-03	6014SH	HA60-29	6075AH
HA60-04	6016SH	HA60-30	6076AH
HA60-05	6018SH	HA60-40	6007CD
HA60-06	6020SH	HA60-41	6008CD
HA60-07	6074SH	HA60-42	6009CD
HA60-08	6075SH	HA60-43	6010CD
HA60-09	6076SH	HA60-44	6011CD
HA60-20	6020AH	HA60-45	6012CD
HA60-21	6024AH	HA60-46	6013CD
HA60-22	6027AH	HA60-47	6014CD
HA60-23	6030AH	HA60-48	6015CD
HA60-24	6034AH	HA60-49	6016CD
HA60-25	6036AH	HA60-50	6017CD
HA60-26	6038AH		

HA100-SERIES

Equivalent to Alcoa 100 Ton Dies



Features

- Fits All Existing 100 Ton Presses Accepting 100 Ton Shell Type Dies
- Marked with Huskie and Equivalent Alcoa Catalog Number

HUSKIE	ALCOA Equivalent	HUSKIE	ALCOA Equivalent	HUSKIE	ALCOA Equivalent
HA100-01	10010SH	HA100-24	10034AH	HA100-41	10008CD
HA100-02	10012SH	HA100-25	10036AH	HA100-42	10009CD
HA100-03	10014SH	HA100-26	10038AH	HA100-43	10010CD
HA100-04	10016SH	HA100-27	10040AH	HA100-44	10011CD
HA100-05	10018SH	HA100-28	10074AH	HA100-45	10012CD
HA100-06	10020SH	HA100-29	10075AH	HA100-46	10013CD
HA100-07	10074SH	HA100-30	10076AH	HA100-47	10014CD
HA100-08	10075SH	HA100-34	10042AH	HA100-48	10015CD
HA100-20	10020AH	HA100-36	10044AH	HA100-49	10016CD
HA100-21	10024AH	HA100-37	10046AH	HA100-50	10017CD
HA100-22	10027AH	HA100-38	10048AH	HA100-51	10018CD
HA100-23	10030AH	HA100-40	10007CD	HA100-52	10019CD
				HA100-53	10020CD



Huskie Dies are configured to be equivalent to Burndy dies of respective size. When using Huskie HT series dies consult the connector manufacturer for their recommended die cross referencing and application instructions. All Huskie dies are machined or cast from solid steel stock and case hardened to 45-50 HRC and are guaranteed for 10,000 operations. These dies are also marked with HT numbers and Burndy cross reference numbers to make cross referencing easy and less confusing. The following chart lists Huskie and equivalent Burndy numbers for reference only. Other manufacturer die numbers are also listed to aid the user in selecting the proper die cross reference numbers when using a particular connector. All connectors are different and the connector manufacturer should be consulted in each case. Many manufacturers offer different size connectors for the same wire size. Huskie Tools, Inc. is not responsible in the event of misuse or misapplication of die sets. Huskie Tools is not a connector manufacturer, but a tool and die supplier.

FOR REFERENCE ONLY! CONSULT YOUR CONNECTOR MANUFACTURER FOR EXACT CABLE, CONNECTOR AND DIE SELECTION.

Approximate Cu	Conductor Range Al	Die Color Code	Huskie Die Set Catalog Number	Burndy Index	Burndy Die Set Catalog Number	T & B Index
6 AWG	8 AWG	BLUE	H41AT/HT41GL	7/374	U5CRT/U8CABT	24
4 AWG	6 AWG	GREY	HT41AU/HT41GE	8/346	U4CRT/U6CABT	29
2 AWG		BROWN	HT41AW	10	U2CRT	33
1 AWG	4 AWG	GREEN	HT41AX	11	U1CRT	37
	4 AWG	GREEN	HT41GM	375	U4CABT	37
1/0 AWG	2 AWG	PINK	HT41AY	12	U25RT	42H
	2 AWG	PINK	HT41GF	348	U2CABT	42H
2/0 AWG		BLACK	HT41AZ	13	U26RT	45
3/0 AWG		ORANGE	HT41BA	14	U27RT	50
	1/0 AWG	TAN	HT41EX	296	U25ART	50
4/0 AWG		PURPLE	HT41BC	15	U28RT	54H
	2/0 AWG	OLIVE	HT41EY	297	U26ART	54H
250 MCM		YELLOW	HT41BE	16	U29RT	62
	3/0 AWG	RUBY	HT41GW	467	U27ART	60
300 MCM		WHITE	HT41BF	17	U30RT	66
	4/0 AWG	WHITE	HT41EZ	298	U28ART	66
350 MCM		RED	HT41BJ	18	U31RT	71H
	250 MCM	RED	HT41FW	324	U29ART	71H
400 MCM		BLUE	HT41BK	19	U32RT	76
	300 MCM	BLUE	HT41GZ	470	U30ART	76
500 MCM		BROWN	HT41BL	20	U34RT	87H
	350 MCM	BROWN	HT41FA	299	U3RT	87H
600 MCM	400 MCM	GREEN	HT41HH/HT41BM	472/22	U32ART/U36RT	94H
	500 MCM	PINK	HT41FB	300	U34ART	99H
750 MCM		BLACK	HT41BP	24	U39RT	106H
	600 MCM	BLACK	HT41HG	473	U36ART	106H
	700/750 MCM	YELLOW	HT41LJ	936	U39ART-2	115H

Wire Rope Dies

12 Ton "U" Type Compression Dies



Features

- Designed for Duplex Oval Sleeves and Button Stops
- For use on Copper and Aluminum Only
- Fits in Any 12 Ton Tool that Uses Standard "U" Dies

ITEM #	DESCRIPTION	ALUMINUM	COPPER
18AC	WIRE ROPE DIE 1/8" AC	1/8"	1/8"
316AC	WIRE ROPE DIE 3/16" AC	3/16"	3/16"
14AC	WIRE ROPE DIE 1/4" AC	1/4"	1/4"
516AC	WIRE ROPE DIE 5/16" AC	5/16"	5/16"
38AC	WIRE ROPE DIE 3/8" AC	3/8"	3/8"
716A12C	WIRE ROPE DIE 7/16" A, 1/2" C	7/16"	1/2"
716C	WIRE ROPE DIE 7/16" C		7/16"
12A	WIRE ROPE DIE 1/2" A	1/2"	

Die Cases

HTK-CASE, DIE-CASE, & W-CASE



HTK-CASE



DIE-CASE



W-CASE

Features of HTK-CASE

- Shock Absorbing Cushion of Air Between Double Walls
- Holds Up To 10 Die Sets

Features of DIE-CASE

- Holds 18 "U" Type Die Sets or 8 "P" Type Die Sets
- Constructed of Heavyweight Plastic

Features of W-CASE

- Holds 12 "W" Type Die Sets
- Constructed of Heavyweight Plastic

The **HTK CASE** offers a convenient way to store your Huskie dies. The case is a custom molded case made with a shock absorbing cushion of air between sturdy double walls. It has ten individual compartments that will hold up to ten die sets. Will hold: HTK-Series, HT41 Series, HT58-Series and HT-Series dies.

The Huskie model **DIE-CASE** is offered as a stand alone die carrying case and is the same case supplied with the REC-3000 Series kits. It will hold either 18 "U" type die sets or 8 "P" type die sets. It is constructed of heavyweight plastic with a hinged see-through top for easy identification of die sets.

The **W-CASE** will hold 12 "W" dies from our HT58-Series.



BP-82

Lithium-Ion Battery

Features

- High Capacity 2.0Ah Battery Pack
- No Memory Effect
- Lightest of Huskie's Battery Pack at .70 lbs
- Impact Resistant Housing
- The Performance is Minimally Affected by Extreme Temperatures
- Non-Hazardous Chemistry and Environmentally Safe
- Recyclable with the RBRC Recycling Program
- 1 Year Warranty

The BP-82 will be included as the standard battery pack with all the ECO-series tool kits, and will also be available to purchase as a replacement battery pack for any other REC-series products. The BP-82 can be charged with any of the Huskie Lithium Ion chargers, including the CH-80, CH-90 & CH-94.



The **BP-82** is a NEW 2.0Ah battery pack designed to replace the BP-80 with a smaller, more compact size for use with the ECO-series streamline tools. Due to the use of advanced cell technology, the BP-82 has the same cycle life as the BP-80, yet it is half the size. With a redesigned housing that has integrated cell supports, as well as conformal coating on the circuit board to protect against corrosion in damp environments, the BP-82 is a more robust battery pack than ever before.

Features

- High Capacity 4.0Ah Battery Pack
- 50% Longer Run Time as Compared to NiCad
- No Memory Effect
- Lightweight Battery Pack
- Impact Resistant Housing
- The Performance is Minimally Affected by Extreme Temperatures
- Minimal Self-Discharge
- Non-Hazardous Chemistry and Environmentally Safe
- Recyclable with the RBRC Recycling Program
- 5 Year Warranty

With a redesigned housing that has integrated cell supports as well as conformal coating on the circuit board to protect against corrosion caused from damp environment, the BP-84 is a more robust battery pack than ever before. The BP-84 can be charged with any of the Huskie Lithium Ion chargers including the CH-80, CH-90 & CH-94.

BP-84

Lithium-Ion Battery



The **BP-84** is a NEW 4.0Ah battery pack designed to replace the BP-80. A new cell pack design and circuitry make the BP-84 the most powerful battery in the Huskie line. Using state of the art circuitry to monitor and control the battery pack, it has been designed to be the most efficient battery with the longest run times that Huskie has ever offered. The LED display gives you remaining battery life in 20% increments.

CH-94

Lithium Ion Charger

Features

- 110V AC Power Cord
- Designed for Huskie Lithium Ion batteries only
- Redesigned contact terminals for a stronger engagement with the battery
- UL/CUL Agency Approvals
- Monitors Battery Temperature and Battery Voltage for Correct Charging
- 5 Year Warranty
- 1 Hour Charge Time

Order Data

CH-94	AC Charger
CH-94DC	DC Charger



The **CH-94** is a Lithium Ion only charger able to charge the BP-80 and the new BP-82 & BP-84 Huskie Tool Batteries. During its 1 hour charge time, the CH-94 monitors battery temperature and battery voltage for correct charging. The design of the charger allows for stability while in motion by allowing the battery to be clipped in place. It also has completely re-designed contacts for a stronger engagement with the battery terminals.

1256-H * 1258-H

Hot Sticks for ECO-EZ Huskie Tools



Crimping Estimates

1256-H	6' Hot Stick
1258-H	8' Hot Stick

Features

- Battery Tool Installs Quickly and Easily On Stick
- 6' and 8' Lengths
- For Overhead And Underground Use
- Tool Adjusts to Multiple Positions With Universal Head 0, 30, and 90 Degrees.
- Push Lever to Activate Tool And Pull To Release
- For Use on Voltages Up To 69KV
- Fiberglass Stick Tested Up To 100KV Per Foot
- Huskie Tools Not Included



REC-SB

Shear Bolt Wrench



Crimping Estimates

Weight	5 lbs. with Battery
Size	13.75" L x 7" H x 3" W

Features

- Battery Operated Shear Bolt Wrench for Shear Bolt Connectors
- For Shear Bolt Underground Connectors
- For Connection 2-8 Services in Hand Holes
- Variable Speed to 2,200 rpm, 1/2" Square Drive
- Short Body Length for Tight Space Application
- Well-Balanced and Lightweight
- 148 ft. Pounds of Torque
- Forward and Reverse
- 5 Year Warranty on Tool, Battery & Charger

The **REC-SB** is a battery operated shear bolt wrench especially designed to torque down and shear the bolts for electrical connection use. The tool features a unique shape to reduce its length for easy access to tight spaces. It has 148 ft./lbs. of torque and features variable speeds up to 2,200 rpm.



Providing Solutions Wherever The Job Takes You



Lighting

EMI Protected Shelter Lights
Wide Area
Equipment & Hazardous Location
Portable Work Lights



Aerial Tools

Cable Placement
Line Clearance



Inside Wiring

Fish Tapes
Glow Fish Rods
Splicer Tools



Underground Cable Pulls & Locating

Conduit Rodders
Traceable Rodders
Live Traces for Gas & Water
Locators



Contact Jameson

800-346.1956
sales@jamesonllc.com

WWW.JAMESONLLC.COM

See The Full Line Of Jameson Products



**Huskie
TOOLS**

**Teaming Up
To Offer More Solutions**



***"I'd Rather Have
a Huskie."***



Line professionals work hard--day and night, sleet and snow--to bring power to the masses. Huskie Tools knows that you need the best tools to do your best job.

As we continue to upgrade our products, we never lose sight of the most important aspect of our tools--Safety.



Huskie
TOOLS





Huskie
TOOLS

195 INTERNATIONALE BLVD
GLENDALE HEIGHTS, IL 60139
800-860-6170
WWW.HUSKIETOOLS.COM

When its on the line, you count on Huskie Tools.